

**DARRANG COLLEGE**

**TEZPUR**

ESTD-1945



ADDRESS:  
DARRANG COLLEGE,  
TEZPUR-784001,  
ASSAM, INDIA.

website-darrangcollege.ac.in  
email-darrangcollege@gmail.com  
phone-03712-220014, 225410



OFFICE OF THE PRINCIPAL  
**DARRANG COLLEGE**  
ESTD. 1945

03712-220014 (Principal)  
Fax no. 03712-224337

darrangcollege@gmail.com

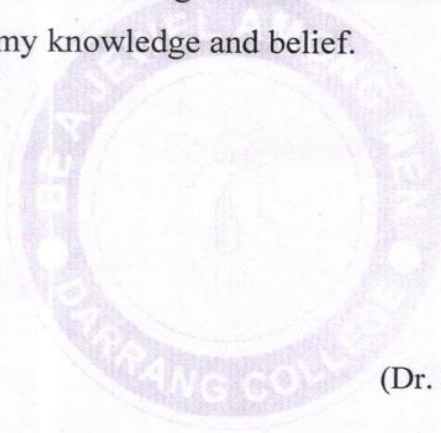
Tezpur, Sonitpur, Assam (784001)

Ref : .....

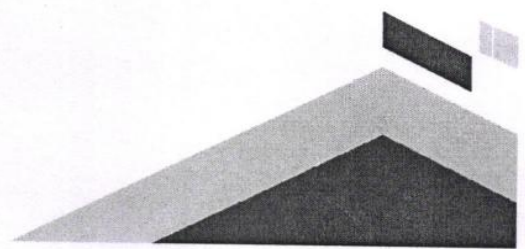
Date : .....

**DECLARATION**

I hereby declare that the data given and the documents furnished herewith are correct to the best of my knowledge and belief.



(Dr. Palash Moni Saikia)  
Principal,  
Darrang College, Tezpur  
Principal  
Darrang College  
Tezpur, Assam





**DARRANG COLLEGE  
TEZPUR (ASSAM) ESTD.1945**

**T.O & P.O. Tezpur, Phone No. 03712-220014 (Principal) 225990 (Vice-Principal), 225410 (Office)**

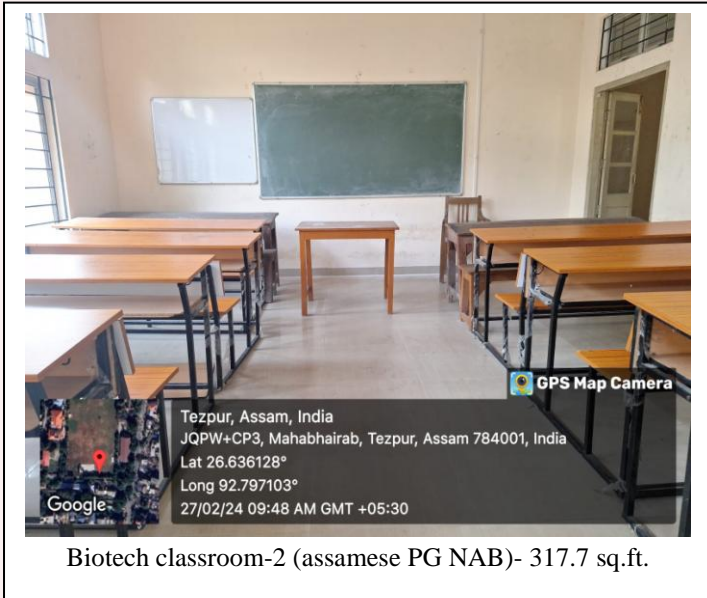
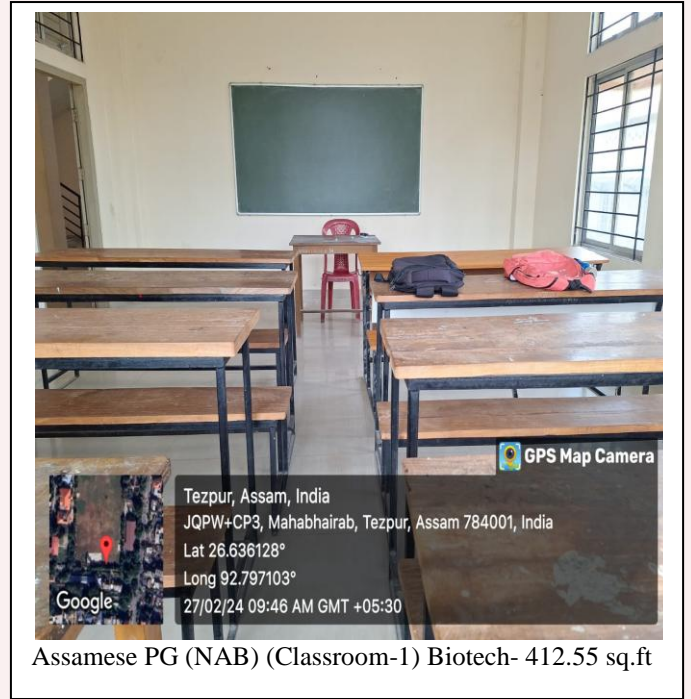
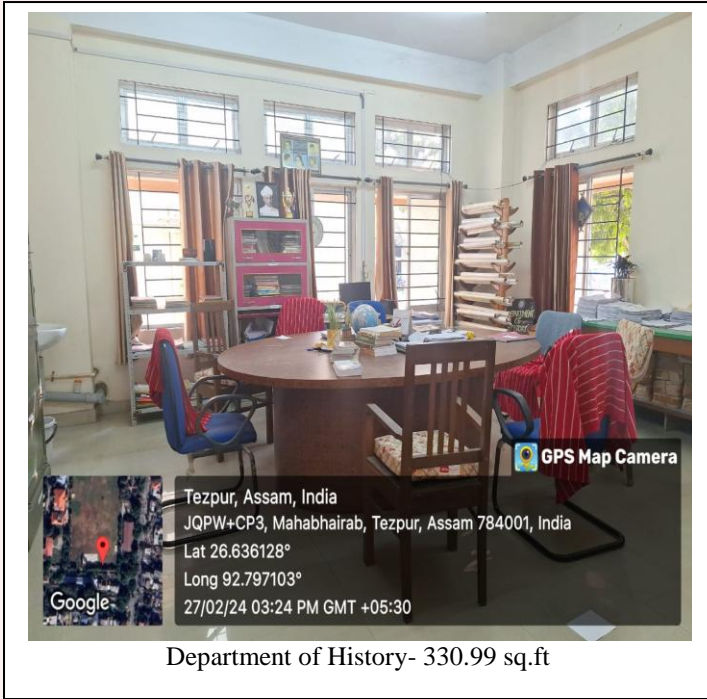
---

**Faxno.03712-224337, Website: [www.darrangcollege.in](http://www.darrangcollege.in), e- mail: [tezdarrangcollege@gmail.com](mailto:tezdarrangcollege@gmail.com)**

**GPS Photos of New academic building in the College**



***New Academic Building***





NAB 4- 633.68 sq.ft.



NAB 7-382.32 sq.ft



NAB 6- 382.32 sq. ft



NAB 5- 382.32 sq.ft



Department of computer science- 237.6 sq. ft.

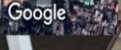


Computer lab- 1036.8 sq. ft

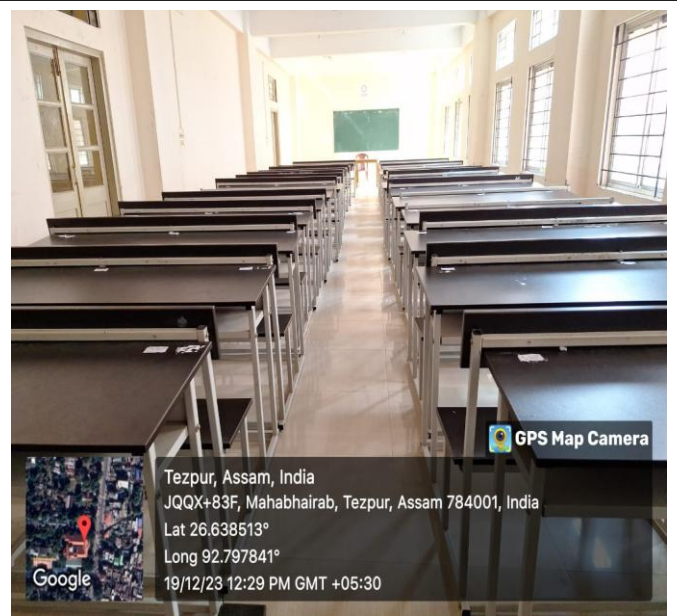


GPS Map Camera

Tezpur, Assam, India  
JQQX+G58, Durgabari Rubber Bagan Rd, Mahabhairab, Tezpur, Assam 784001, India  
Lat 26.638595°  
Long 92.797932°  
19/12/23 12:28 PM GMT +05:30

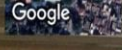


NAB 2- 1147.52 sq. ft.



GPS Map Camera

Tezpur, Assam, India  
JQQX+83F, Mahabhairab, Tezpur, Assam 784001, India  
Lat 26.638513°  
Long 92.797841°  
19/12/23 12:29 PM GMT +05:30



NAB 3- 1060.22 sq. ft.

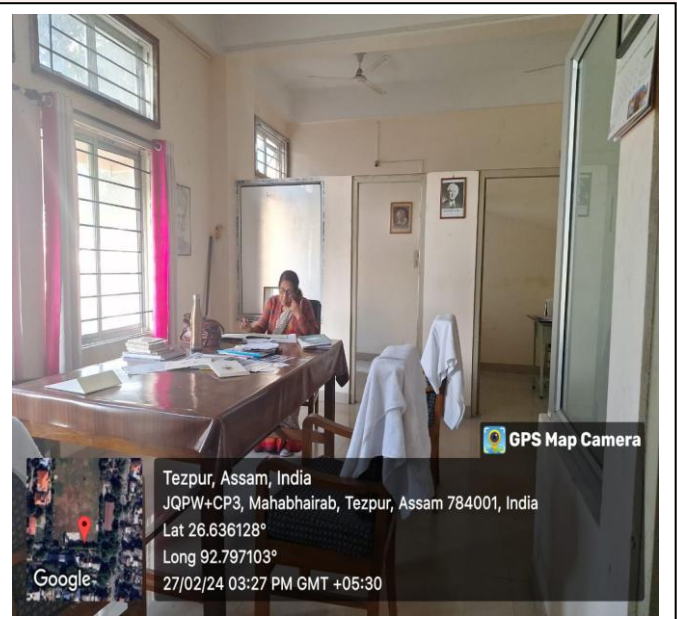


GPS Map Camera

Tezpur, Assam, India  
JQPW+CP3, Mahabhairab, Tezpur, Assam 784001, India  
Lat 26.636128°  
Long 92.797103°  
27/02/24 03:38 PM GMT +05:30



NAB 11 Philosophy-548.64 sq. ft.



GPS Map Camera

Tezpur, Assam, India  
JQPW+CP3, Mahabhairab, Tezpur, Assam 784001, India  
Lat 26.636128°  
Long 92.797103°  
27/02/24 03:27 PM GMT +05:30



Department of Philosophy- 518.61 sq.ft.

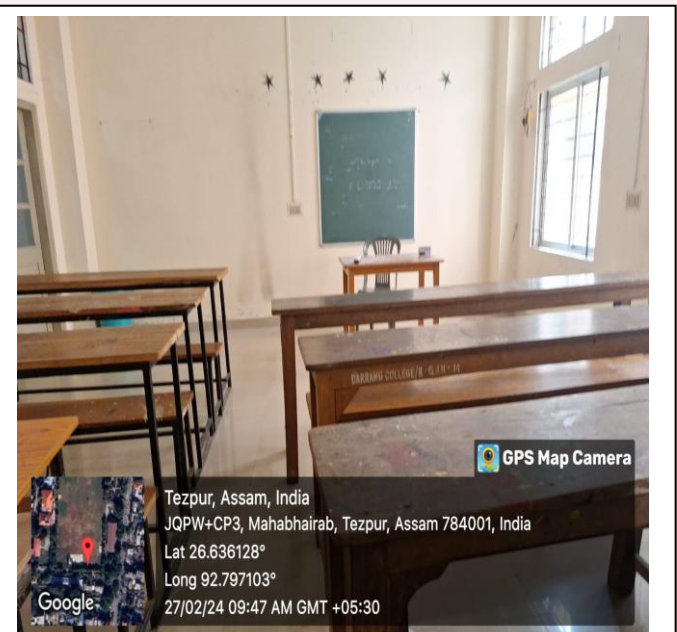


GPS Map Camera

Tezpur, Assam, India  
JQPW+CP3, Mahabhairab, Tezpur, Assam 784001, India  
Lat 26.636128°  
Long 92.797103°  
27/02/24 03:29 PM GMT +05:30



NAB 1- 1131.84 sq. ft.



GPS Map Camera

Tezpur, Assam, India  
JQPW+CP3, Mahabhairab, Tezpur, Assam 784001, India  
Lat 26.636128°  
Long 92.797103°  
27/02/24 09:47 AM GMT +05:30



Small room 1 (NAB)- 115.52 sq. ft.



Department of political science -457.38 sq. ft.



Departmental library political science - 332.86 sq. ft.



Psychology 1- 386.26 sq. ft.



Department of Psychology -251.72 sq. ft.



Counselling centre psychology - 260.40 sq. ft.



Psychology 3- 371.07 sq. ft







Dept of education- 375.84 sq. ft.



Statistics-3 computer and statistical counseling-242.49 sq. ft.



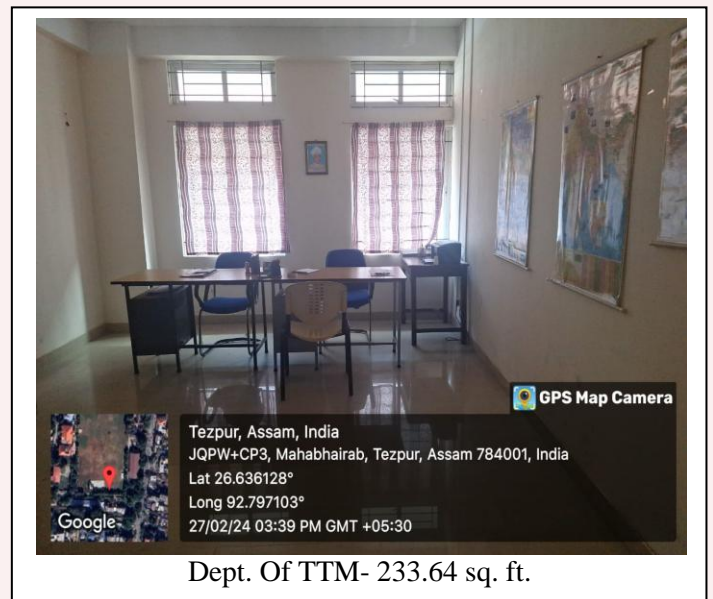
Library cum computer room- 242.49 sq. ft.



Washroom (men) 2nd floor- 288.64 sq. ft.



Statistics 4- 285.147 sq. ft.



Dept. Of TTM- 233.64 sq. ft.



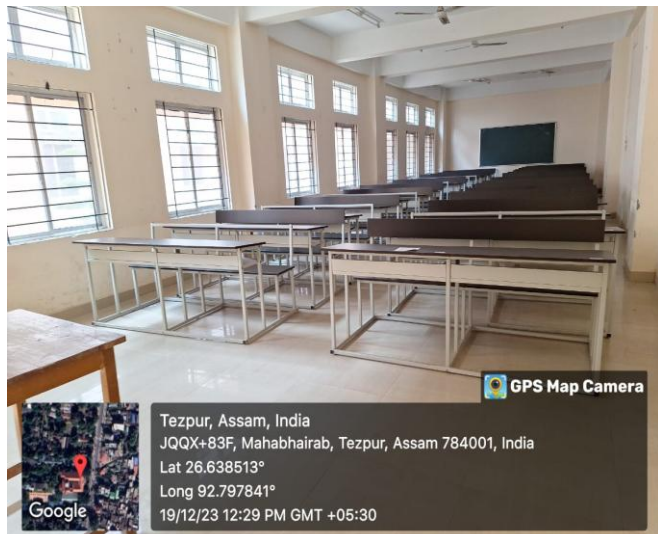
Sociology 3- 269.04 sq. ft.



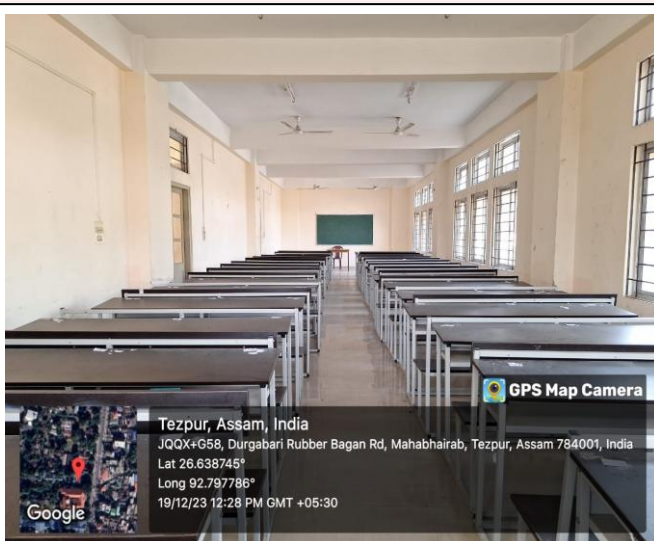
Sociology 4- 233.64 sq. ft.



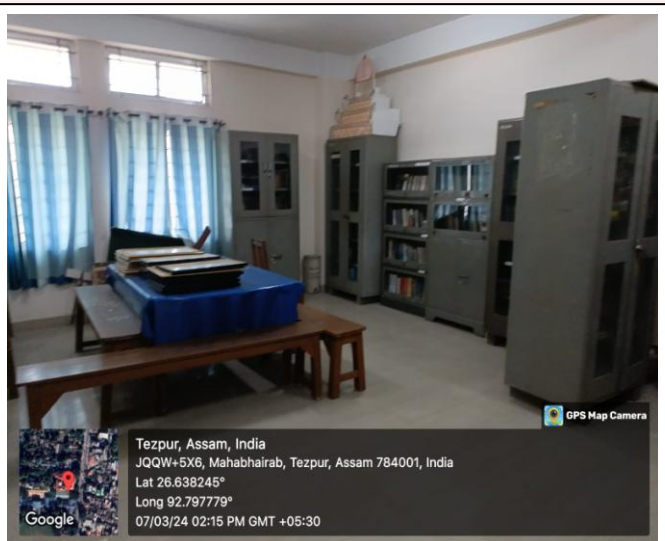
Department of sociology- 244.64 sq. ft.



Sociology 2- 568.70 sq. ft.



Sociology 1- 933.10 sq. ft.



Dept. Library (mathematics)- 378.78 sq. ft.



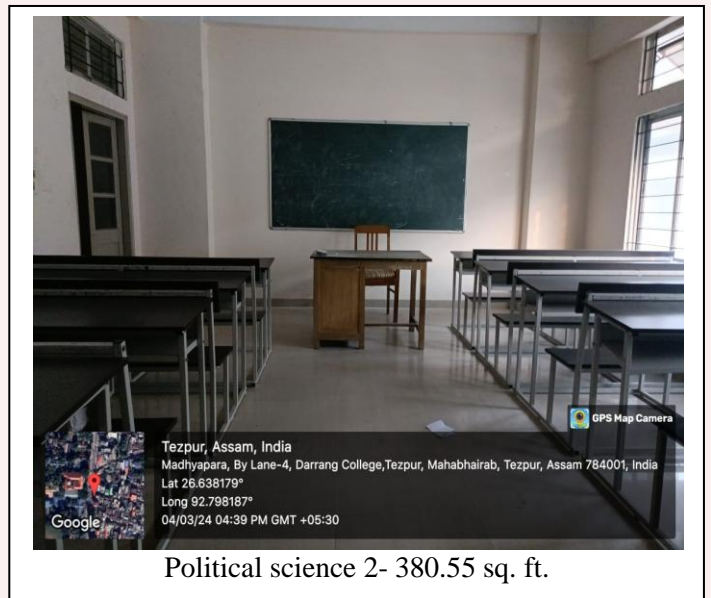
Dept. Of mathematics- 378.78 sq. ft.



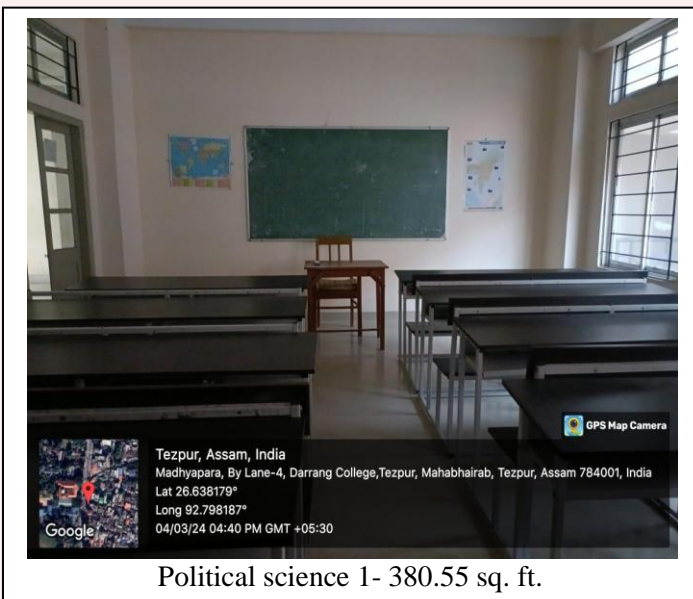
Math. Computer lab seminar hall- 631.89 sq. ft.



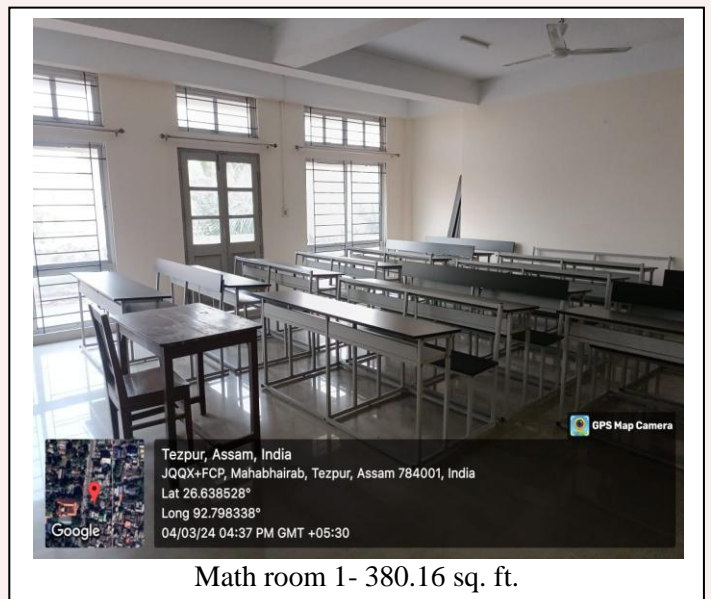
Washroom (general)2nd floor)- 284.97 sq. ft.



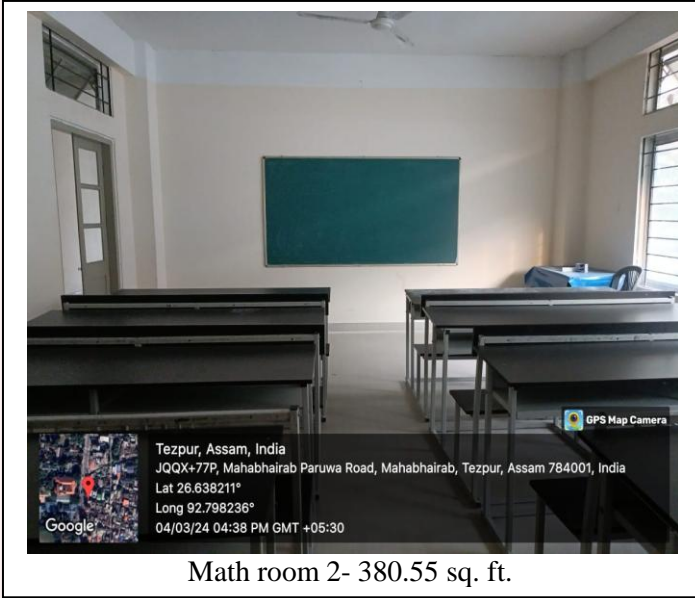
Political science 2- 380.55 sq. ft.



Political science 1- 380.55 sq. ft.



Math room 1- 380.16 sq. ft.



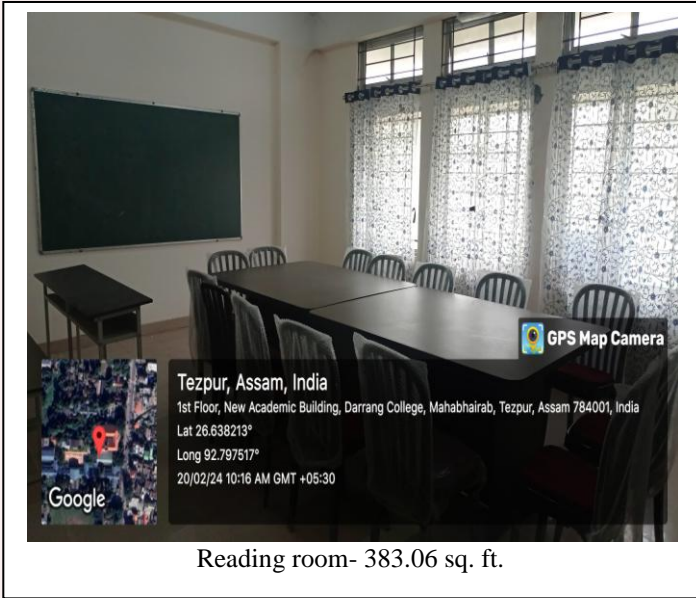
Math room 2- 380.55 sq. ft.



Pol science 3- 284.97 sq. ft.



CSSC office- 382.32 sq. ft.



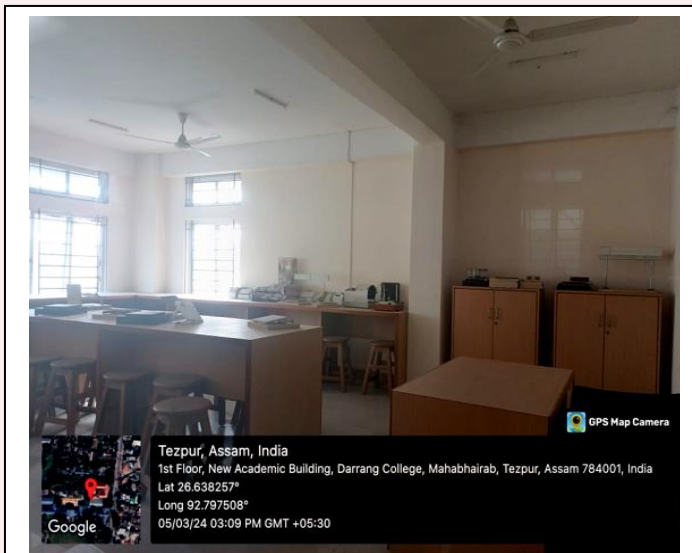
Reading room- 383.06 sq. ft.



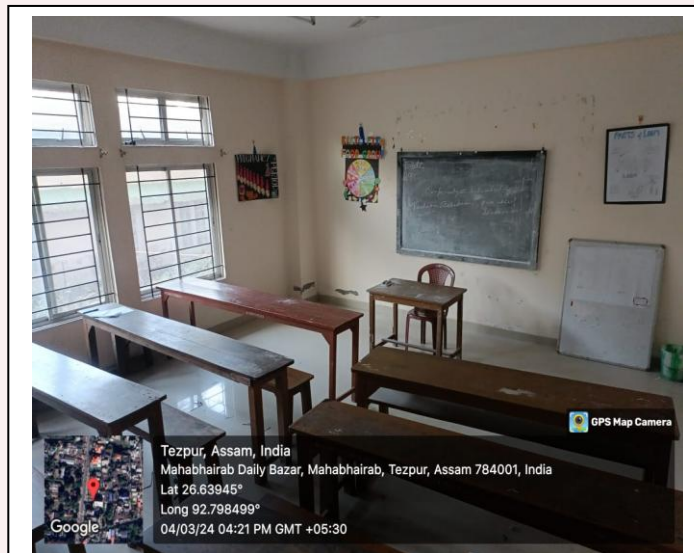
Gents toilet (3rd floor)- 270.469 sq. ft.



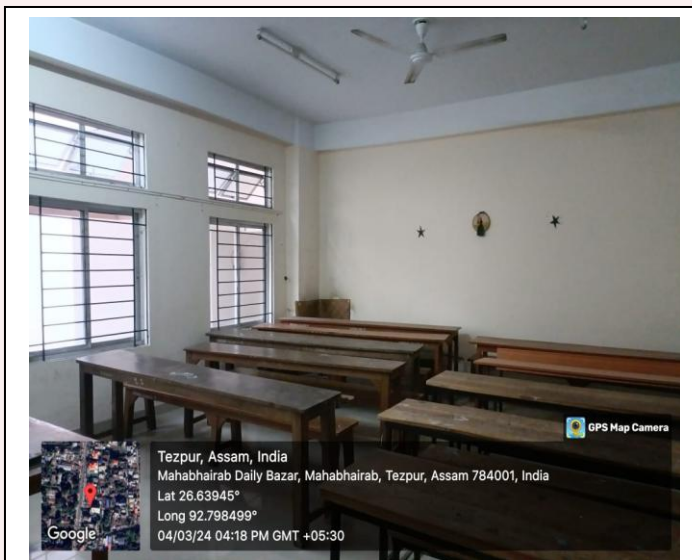
Ladies toilet (3rd floor)- 210.6 sq. ft.



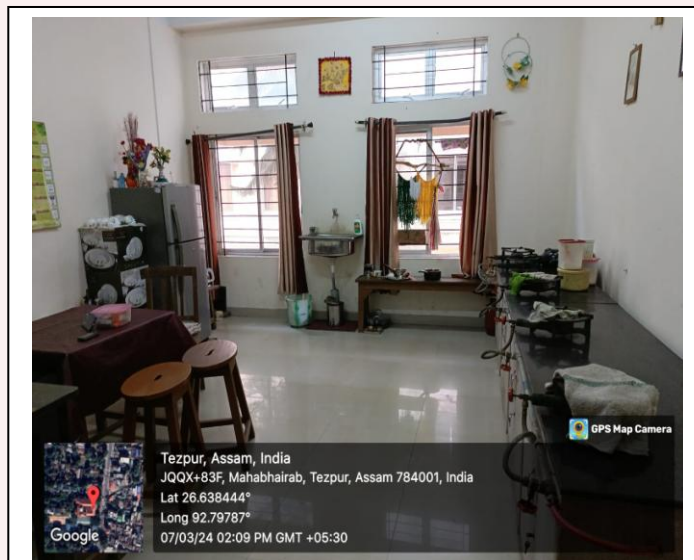
Laboratory (psychology 3rd floor)- 459 sq. ft.



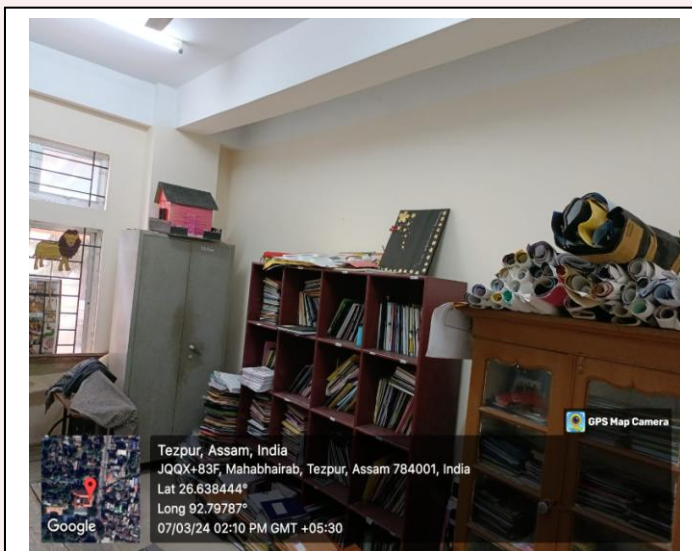
Home science (classroom-2)- 387.63 sq. ft.



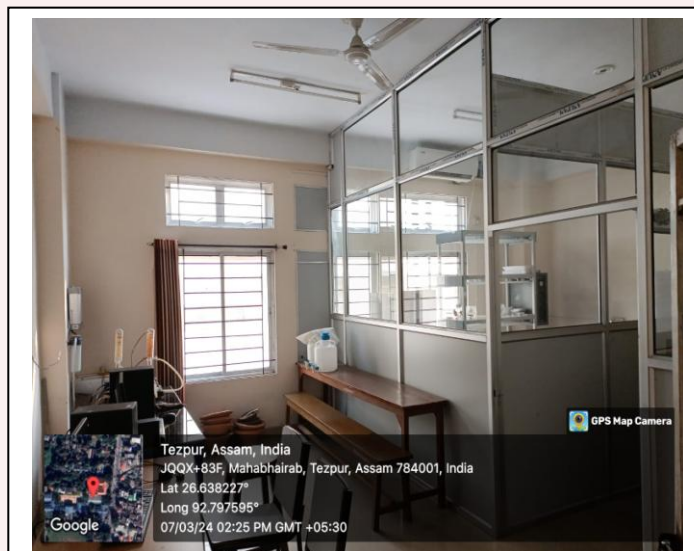
Classroom3 (home science)- 234.08 sq. ft.



Home science laboratory- 235.41 sq. ft.



Library (home science)- 160.336 sq. ft.



Tissue Cultivation (Biotech)- 466.56 sq. ft.



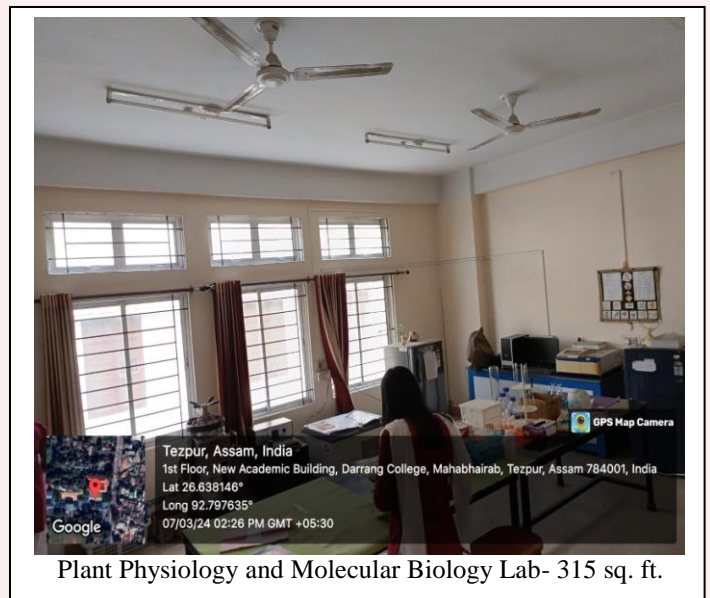
Education 2- 382.32 sq. ft.



Education lab (lab-1)- 382.32 sq. ft.



Education lab 2- 244.08 sq. ft.



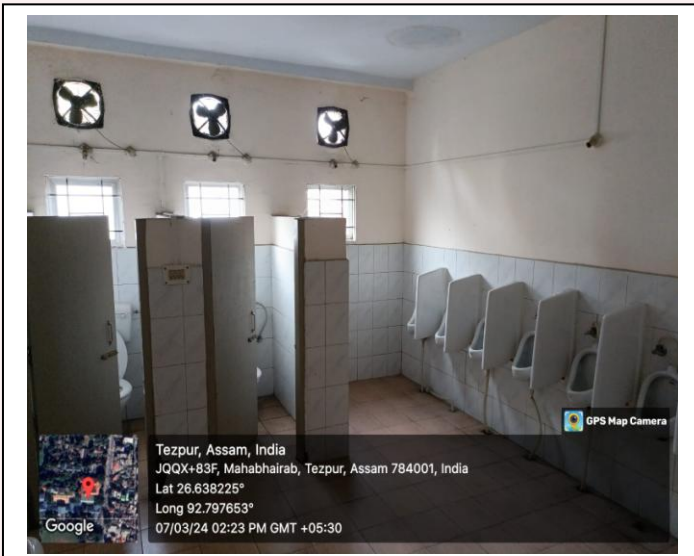
Plant Physiology and Molecular Biology Lab- 315 sq. ft.



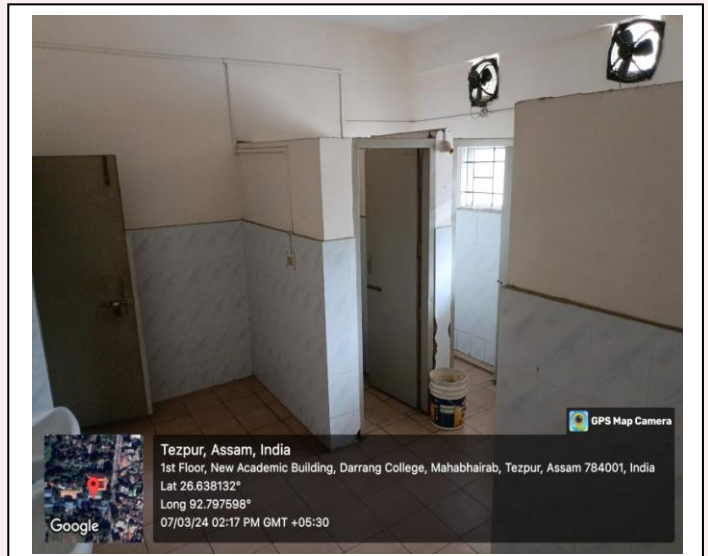
BBT-institutional Biotech hub- 382.32 sq. ft.



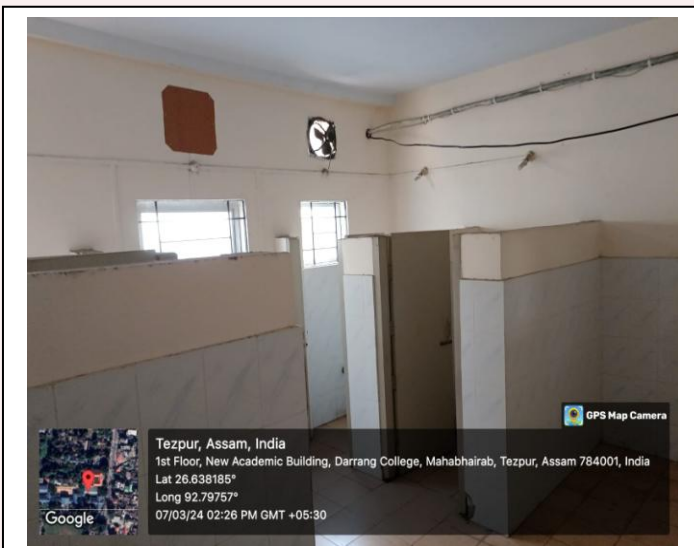
Conference hall NAB-909.06 sq. ft.



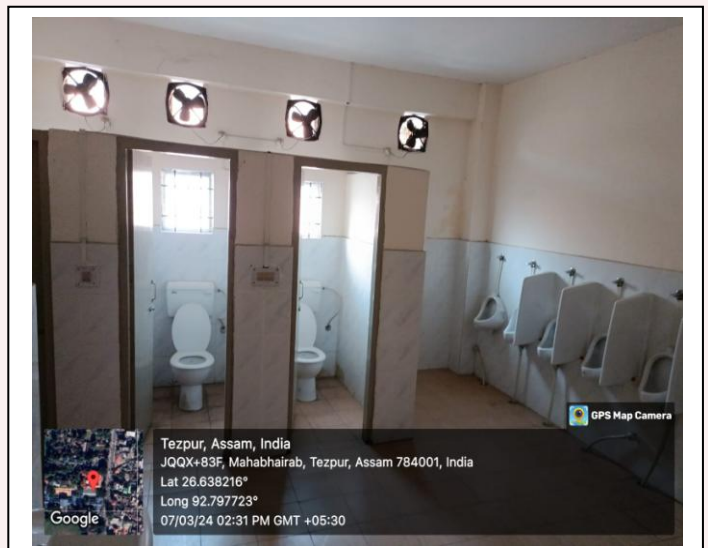
Male washroom (ground floor)- 267.45 sq. ft.



Female washroom (Ground floor)- 290.28 sq. ft.



Ladies toilet (1st floor)- 290.28 sq. ft



Gents toilet (1st floor)- 288.64 sq. ft.